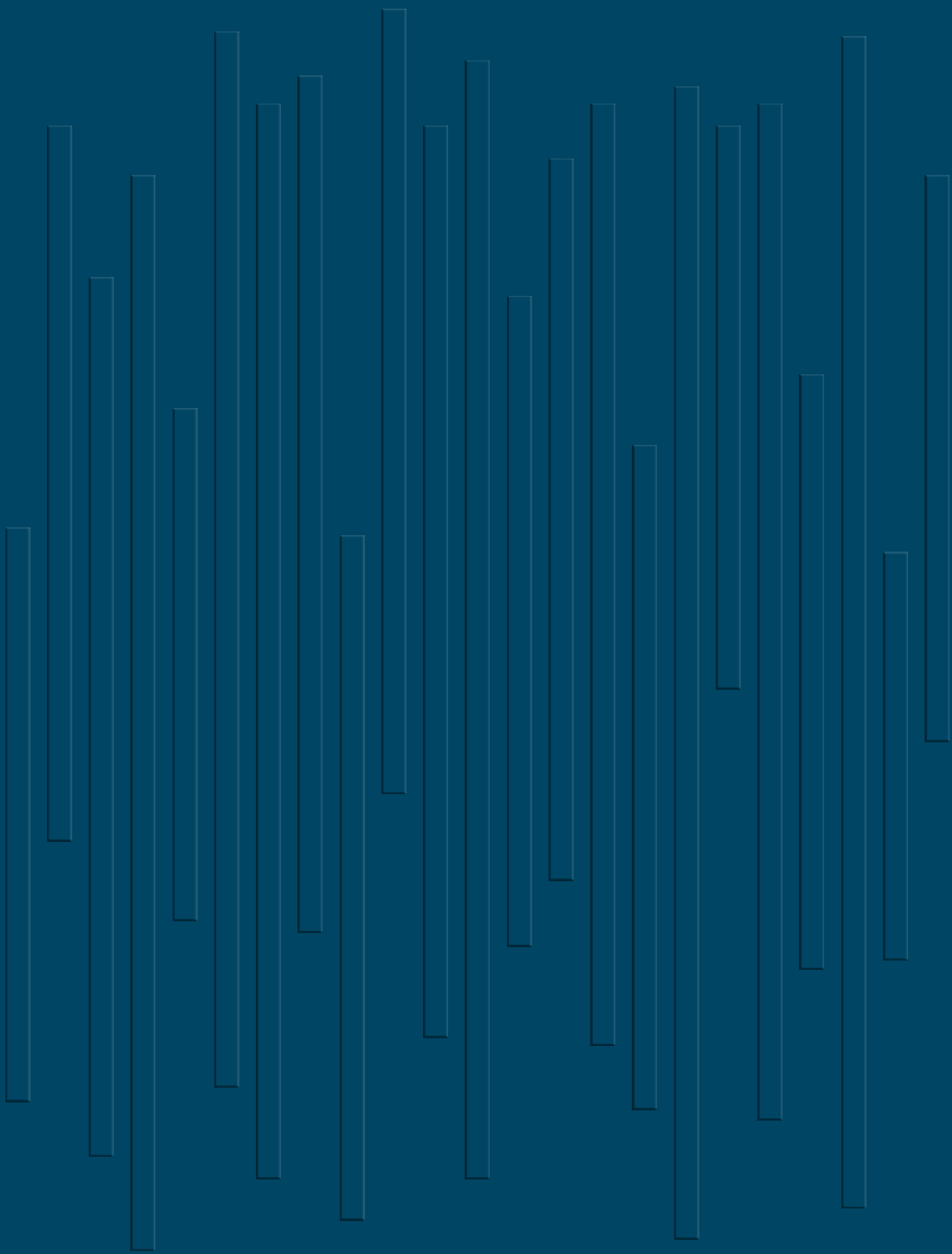


L I N L L C





LIN professionals work as one team to deliver true collective intelligence.

LIN consists of professionals with exceptional expertise and outstanding ability.

LIN's professionals possess proven expertise.

For each matter, LIN assembles a dedicated One Team tailored to the client's needs, enabling multiple professionals to contribute their experience and insights.

LIN provides consistent and seamless support from the beginning of our engagement until the matter is fully resolved.

Our attorneys approach each case with the highest level of commitment, recognizing that the quality of our engagement directly impacts client satisfaction.

Focused on our clients' needs and perspectives, LIN is dedicated to achieving the best possible outcomes from start to finish.

We pride ourselves on delivering service that is both empathetic and results-driven.

LIN empathizes with our clients.

LIN strives to offer integrated legal services spanning diverse practice areas, serving as a bridge between domestic and international markets.

Our goal is to be a legal partner that provides tangible, meaningful value to all clients.

Two-Year Recipient of the National Industry Award

Legal Services
(2024-2025, IPS)

DealSite IB Award

M&A Legal Advisory, Best House Award
(2025, DealSite)

Three-Year Consecutive Winner of the Korea Law Firm Award

Structured Finance & Securitization
(2022-2024, ABLJ)

Innovation Law Firm Award

2024 Korea's Best Law Firm & Lawyer
(2024, Korea Economic Daily)

Selected as Hidden Champion & Top Law Firm

2024 Law Firm Consumer Report
(April 2024, The Law Times)

M&A League Table -7th Place

(H1 2025, Invest Chosun)

EXPERTISE

SECTOR

Corporate Governance	Antitrust & Competition	Finance·Insurance	Bankruptcy·Restructuring
Merger & Acquisition Private Equity	International Dispute Resolution	International Trade	HR·Serious Accident
ESG·Compliance	White Collar Defense·Investigations	Data Security·Privacy	Intellectual Property
Tax	GR	Litigation	Wealth Management

INDUSTRY

Construction·Real Estate	Entertainment·Sports	AI·Platform·Technology	Energy·Infrastructure
Mobility	Public Procurement ·Defense Industry	Pharmaceuticals· Health Care·Life Sciences	Maritime

INTERNATIONAL

South East Asia	Latin America·Spain	China	Japan
-----------------	---------------------	-------	-------

Main Practice Areas



Finance

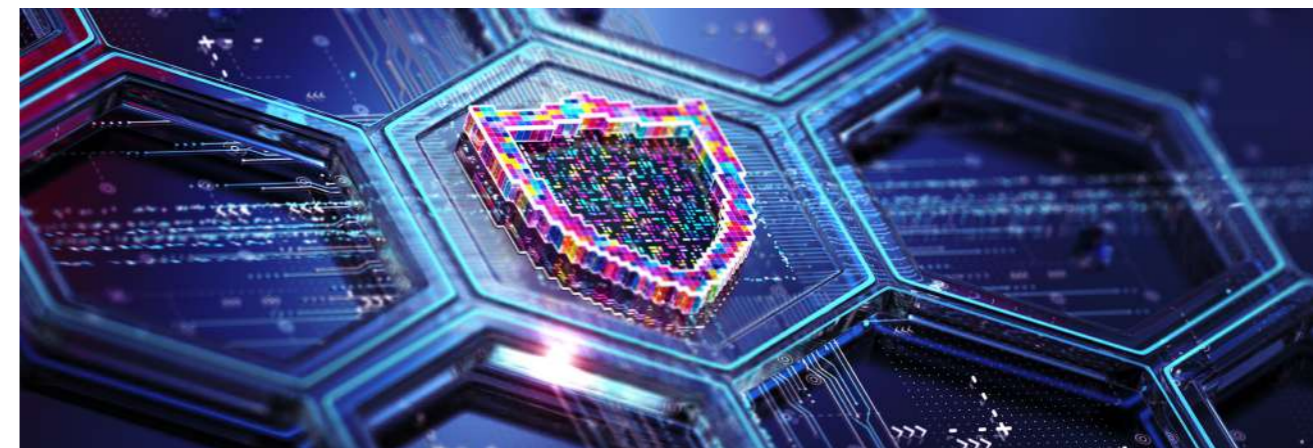
Financial institutions must navigate a complex landscape of regulations imposed by financial authorities without the slightest deviation. At the same time, they are expected to meet diverse market demands to protect consumers. They are required to maintain financial soundness, enhance transparency and efficiency in corporate governance, and fulfill various social responsibilities as public-facing institutions. Internally, they must establish robust internal control systems to prevent financial misconduct, while externally, they need to comply with applicable operational regulations. Moreover, they face the challenge of responding to fintech innovation with new financial products and services.

To meet this needs, LIN has organized a dedicated Finance Team composed of seasoned experts with extensive experience at financial authorities including the Financial Supervisory Service and the Korea Exchange, as well as top-tier domestic law firms such as Kim & Chang. We provide comprehensive advisory and representation services to numerous financial institutions, supporting them in identifying and mitigating legal and regulatory risks and delivering practical, actionable solutions to both domestic and international clients. Our team also has deep experience across the full spectrum of capital markets work—from IPOs and CB/BW issuances to accounting audits and disclosure investigations—leveraging insights drawn from significant regulatory and transactional backgrounds to guide clients through their most important matters.

M&A

Mergers and acquisitions represent some of the most complex and strategically significant corporate transactions. They require sophisticated interdisciplinary expertise to evaluate not only the core legal frameworks—such as contract law, commercial law, and the Financial Investment Services and Capital Markets Act—but also industry-specific regulations, environmental and labor considerations, and antitrust and fair-trade issues. Beyond technical legal analysis, successful M&A transactions demand strategic negotiation skills, market insight, and a deep understanding of the target company and its industry.

LIN's dedicated M&A Team is composed of professionals with extensive experience from leading domestic law firms, global financial institutions, private equity funds, and accounting firms. Our team operates as an integrated One Team, enabling us to provide seamless, high-quality advisory services across all stages of the transaction. As a result of this specialization and collaborative approach, LIN has consistently ranked within the top 10 of major M&A league tables since 2023, strengthening our position in the market and steadily expanding our client base.



APT (AI·Platform·Technology)

The APT (AI · Platform · Technology) Team traces its origins to Tek&Law, a boutique law firm active in the TMT sector since 2012, before its integration into LIN in 2019.

Today, our experts work across a broad spectrum of emerging industries, including AI, K-Culture Tech, data privacy, digital healthcare, media platforms, climate tech, mobility tech, digital forensics and information security, fintech, and digital assets. This multidisciplinary structure allows us to deliver client-focused legal services that keep pace with rapid technological and industrial change.

The APT Team has been consistently recognized for its expertise, receiving the Leading Lawyer award in the TMT category from Legal Times multiple times between 2015 and 2025. Notably, in 2024, the Team achieved a perfect score of 5.0 in the TMT practice evaluation by the Law Times, reflecting continued acknowledgment of its professionalism by authoritative legal publications and clients alike.

Intellectual Property

LIN's Intellectual Property (IP) Team is composed of specialists who have successfully handled IP disputes at leading domestic law firms, major patent firms, and top domestic and multinational corporations. Working closely with Patent Law Firm LIN—whose technical expertise spans electrical and electronics, chemistry and biotech, mechanical engineering, and trademarks and designs—we provide one-stop, technically informed solutions across all IP-related issues for clients in Korea and around the world.

Furthermore, the IP team offers specialized legal services not only in traditional IP areas such as patents, copyrights, trade secrets, and unfair competition, but also in complex and emerging areas, including technology-special IPOs, healthcare licensing agreements, open-source software license compliance, content investment contracts, IP due diligence in M&A transactions, and investigations of unfair trade practices.

● **Jun. 2017**

LIN established

● **Dec. 2017**

Inauguration of Managing Partner Jin Seok Lim

● **Jan. 2019**

Integration with Tek&Law
(formerly led by Managing Partner Tae Eon Koo)

● **Jun. 2024**

Office Expansion at 316 Tower

● **Dec. 2024**

Certified as a Family-Friendly Excellent Company by the Ministry of Gender Equality and Family

● **Jun. 2025**

Conversion to a Limited Liability Company (LLC)

● **Sep. 2025**

Merger with Daeji Law

● **Oct. 2025**

176 Professionals at LIN
(including attorneys, advisors, accountants, labor consultants, and patent attorneys)

LIN faithfully upholds the fundamentals of legal services while leading the innovations required for the future.

By leveraging the collective intelligence of verified experts across diverse fields, we have consistently met the evolving needs of our clients.

Looking ahead, LIN will continue to set new standards in legal services, driven by the synergy of digital transformation and interdisciplinary integration.

History & Future

